

Single Row Terminal Blocks

Kulka® 1690 Series 300 Volts



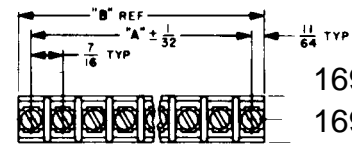
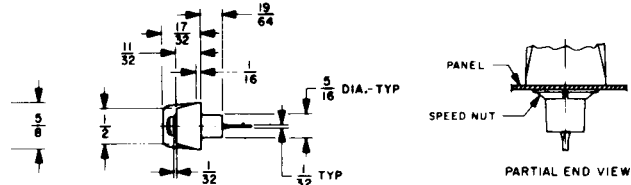
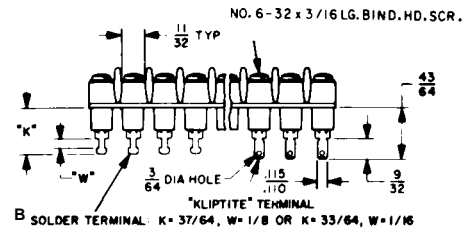
Specifications:

Base, Phenolic, 150° C
Screws, #6-32 Binder Head, Slotted
7/16" Centers
Terminals, Plated Brass
Wire Range #14 Max.- 20 Amps
The Suitability of These Devices for Greater Currents Shall Be
Determined in the End-Use Application.
UL Recognized File No. E47811
CSA Certified File No. LR19766

CE

1691 GP/ 1692 GP/ 1693 GP

# of Terms	Dimensions		# of Terms	Dimensions	
	A	B		A	B
1	---	0.34	14	5.69	6.03
2	0.44	0.78	15	6.13	6.44
3	0.88	1.22	16	6.58	6.91
4	1.31	1.66	17	7.00	7.34
5	1.75	2.09	18	7.44	7.78
6	2.19	2.53	19	7.88	8.22
7	2.63	2.97	20	8.31	8.66
8	3.06	3.41	21	8.75	9.09
9	3.50	3.85	22	8.63	9.06
10	3.94	4.28	23	10.06	10.41
11	4.38	4.78	24	10.50	10.84
12	4.81	5.16			
13	5.25	5.69			



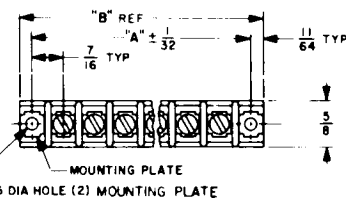
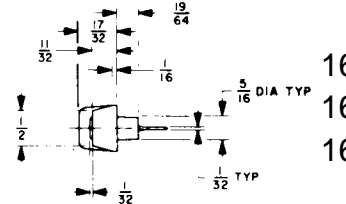
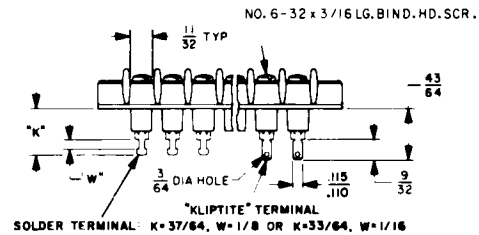
1691 solder terminal
K=33/64 W=1/16

1692 kiptite terminal

1693 solder terminal
K=37/64 W=1/8

1694 GP/ 1695 GP/ 1696 GP

# of Terms	Dimensions		# of Terms	Dimensions	
	A	B		A	B
1	0.88	1.22	13	6.13	6.47
2	1.31	1.66	14	6.56	6.91
3	1.75	2.09	15	7.00	7.34
4	2.19	2.53	16	7.44	7.78
5	2.63	2.97	17	7.88	8.22
6	3.06	3.41	18	8.31	8.66
7	3.50	3.84	19	8.75	9.09
8	3.94	4.28	20	9.19	9.53
9	4.38	4.72	21	9.63	9.97
10	4.81	4.16	22	10.06	10.41
11	5.25	5.59	23	10.50	10.84
	12	5.69	6.03		



1694 solder terminal
K=33/64 W=1/16

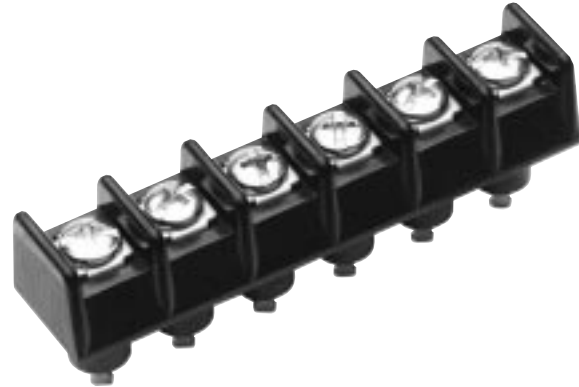
1695 kiptite terminal

1696 solder terminal
K=37/64 W=1/8

Single Row Terminal Blocks

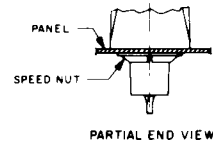
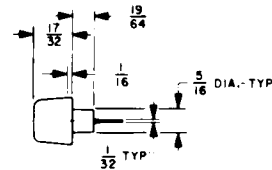
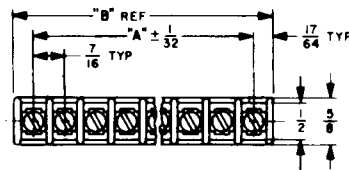
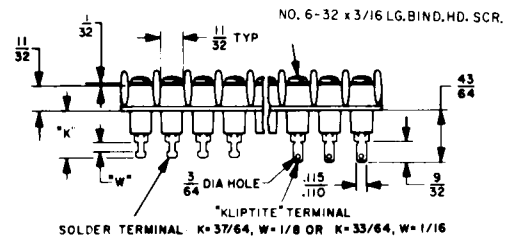
Kulka® 1690 Series

300 Volts



1697 GP/ 1698 GP/ 1699 GP

# of Terms	Dimensions		# of Terms	Dimensions	
	A	B		A	B
1	---	0.53	13	5.25	5.78
2	0.44	0.97	14	5.69	6.22
3	0.88	1.41	15	6.13	6.66
4	1.31	1.84	16	6.56	7.09
5	1.75	2.28	17	7.00	7.53
6	2.19	2.72	18	7.44	7.97
7	2.63	3.16	19	7.88	8.41
8	3.06	3.59	20	8.31	8.84
9	3.50	4.03	21	8.75	9.28
10	3.94	4.47	22	9.19	9.72
11	4.38	4.91	23	9.63	10.16
12	4.81	5.34			



Hardware Options:

- KT 46 = Full Quick Connect (0° Flat)
- KT 47 = Full Quick Connect (45° Bend)
- KT 48 = Full Quick Connect (90° Bend)

- ST = Full Solder
- J601 = Line to Line Jumper
- 3/4 ST = Half Solder

- KT 52 = Half Quick Connect (0° Flat) .250
- KT 53 = Half Quick Connect (45° Bend) .250
- KT 54 = Half Quick Connect (90° Bend) .250

- 1697 solder terminal
K=33/64 W=1/16
- 1698 kiptite terminal
- 1699 solder terminal
K=37/64 W=1/8